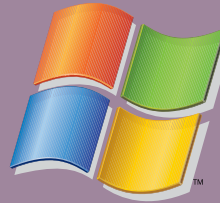


# Fechamento de Arquivos



INDESING cs3



## QUADRO - GENERAL

**Print**

Print Preset: [Custom]  
Printer: FUJI\_Luxcel\_F5600  
PPD: FUJI\_Luxcel\_F5600 v3015.102

**General**

Setup  
Marks and Bleed  
Output  
Graphics  
Color Management  
Advanced  
Summary

General

Copies: 1  Collate  Reverse Order

Pages

Pages:  All  
 Range: 1-10

Sequence: All Pages

Spreads  
 Print Master Pages

Options

Print Layers: Visible & Printable Layers

Print Non-printing Objects  
 Print Blank Pages  
 Print Visible Guides and Baseline Grids

Save Preset... Setup... Print Cancel

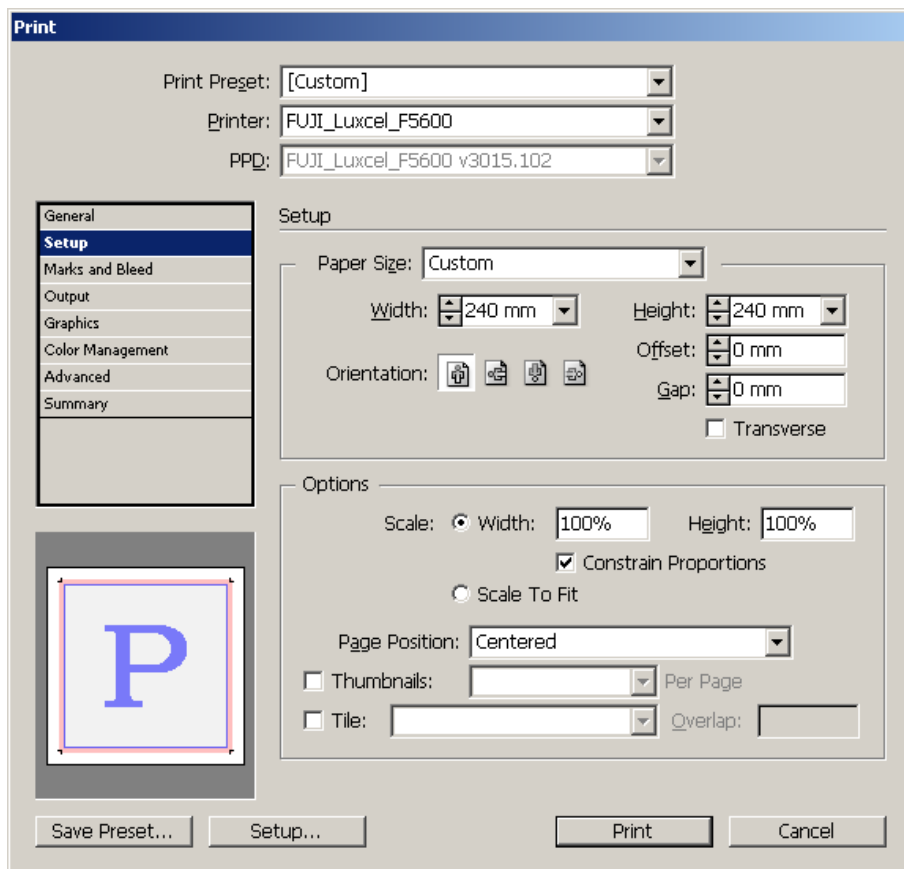
**Print** - Fuji\_Luxcel\_F5600.

**PDD** - (Fuji\_Luxcel\_F5600).

**Spreads** - Desmarque a opção.

**Print Blank Pages** - Marque essa opção.

## QUADRO - SETUP



**Paper Size** - Escolha o formato da página com acréscimo de 5 mm na largura e altura. Caso não encontre o formato desejado digite as medidas nos campos **Width** e **Height**.

**Page Position**  
Escolha opção Centered.

## QUADRO - MARKS & BLEED

Print

Print Preset: [Custom]

Printer: FUJI\_Luxcel\_F5600

PPD: FUJI\_Luxcel\_F5600 v3015.102

General

Setup

**Marks and Bleed**

Output

Graphics

Color Management

Advanced

Summary

Marks and Bleed

Marks

All Printer's Marks      Type: Default

Crop Marks      Weight: 0.25 pt

Bleed Marks      Offset: 3 mm

Registration Marks

Color Bars

Page Information

Bleed and Slug

Use Document Bleed Settings

Bleed:

Top: 5 mm      Inside: 5 mm

Bottom: 5 mm      Outside: 5 mm

Include Slug Area

Save Preset...    Setup...    Print    Cancel

### All Printer's Marks:

Marque opção **Crop Marks** as outras opções deixe desmarcadas.

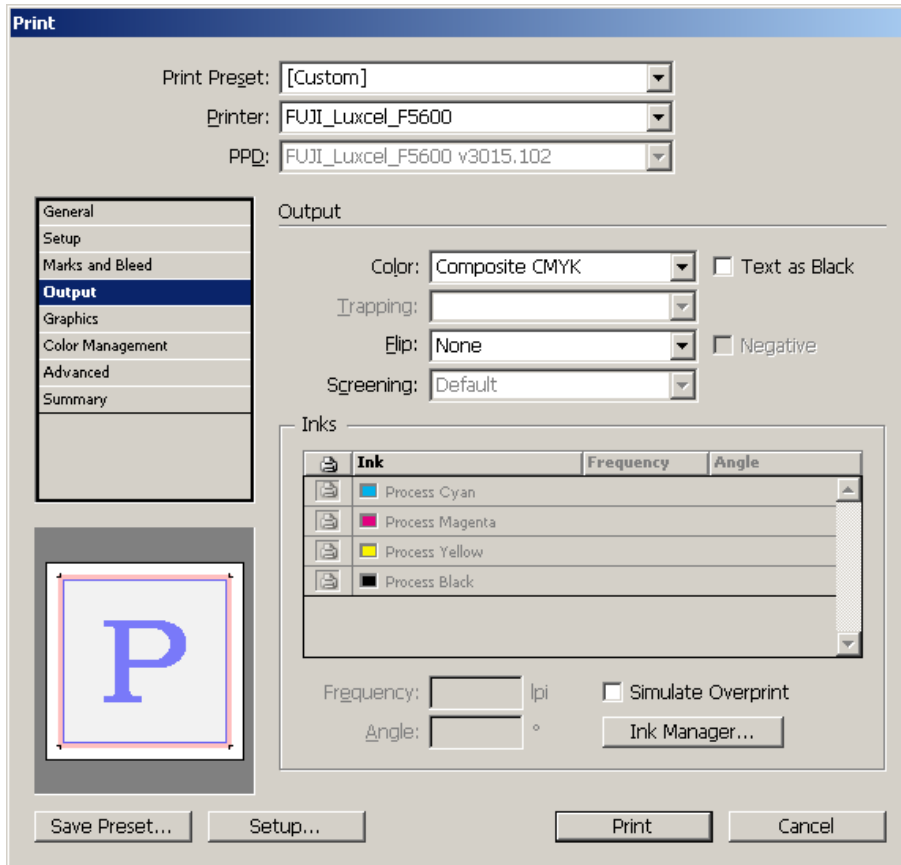
**Offset:** 3mm

**Bleeds:** = Sangria

**Top: (5mm) Bottom: (5mm)**

**Left: (5mm) Right: (5mm)**

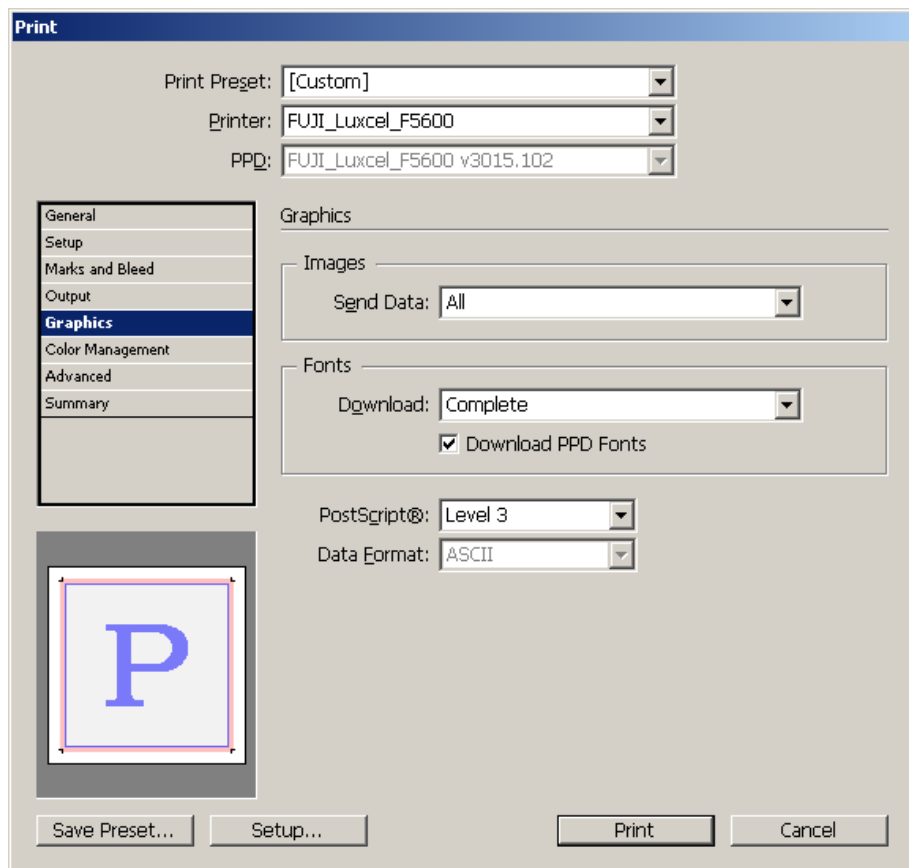
## QUADRO - OUTPUT



Color - Composite CMYK

Flip: None

## QUADRO - GRAPHICS

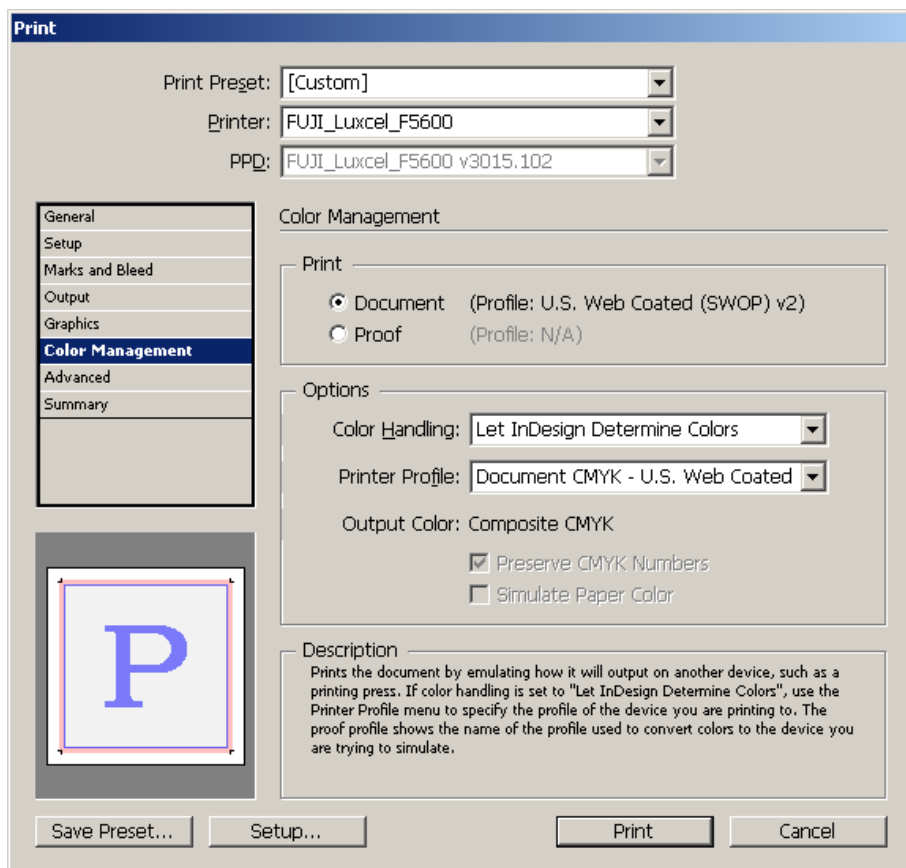


**Send Data:** All

**Download:** Complete. Marque a opção Download PPD Fonts.

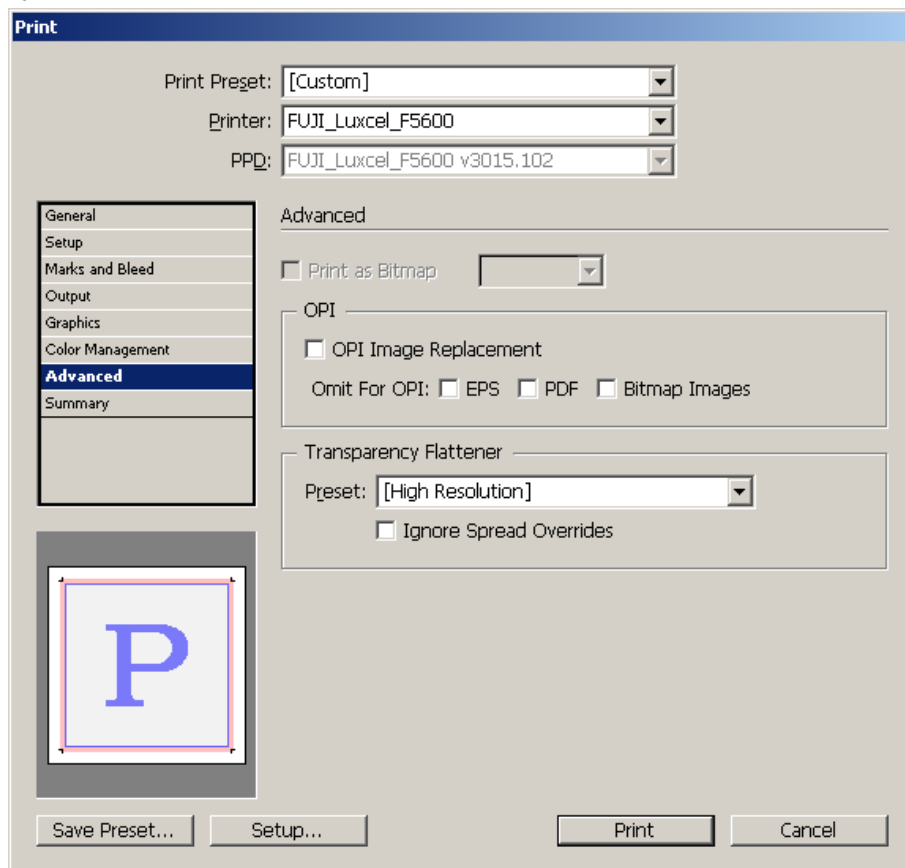
**PostScript®:** Level3.

## QUADRO - COLOR MANAGEMENT



Nesta opção mantenha o esquema original do arquivo.

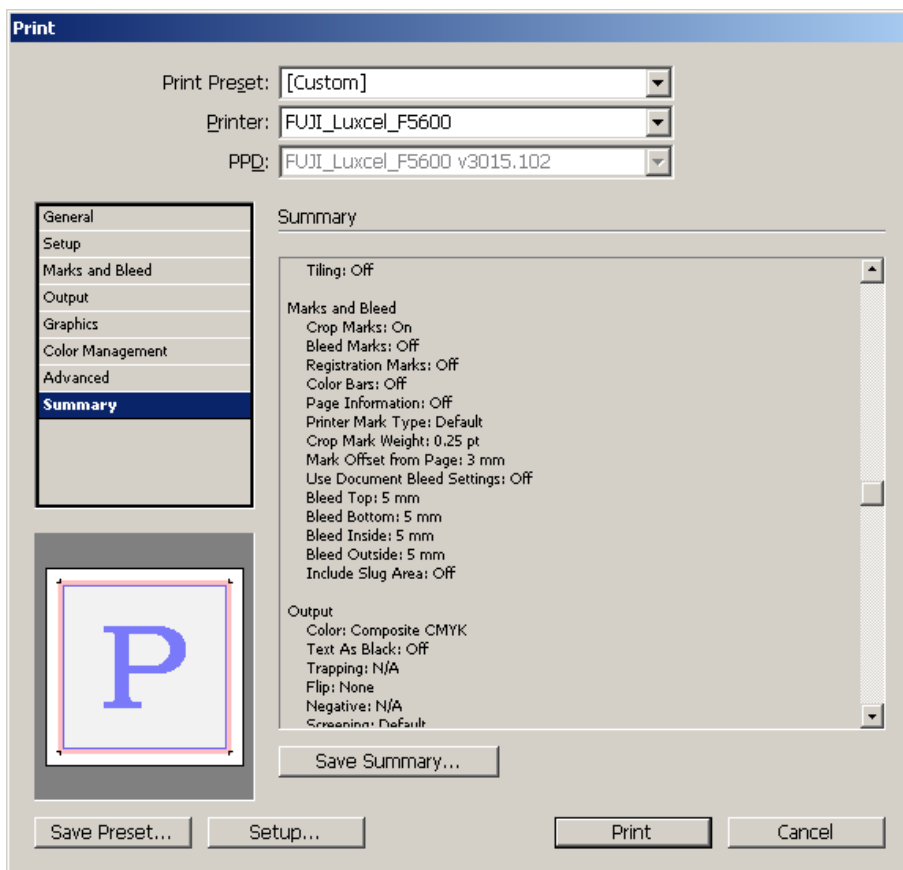
## QUADRO - ADVANCED



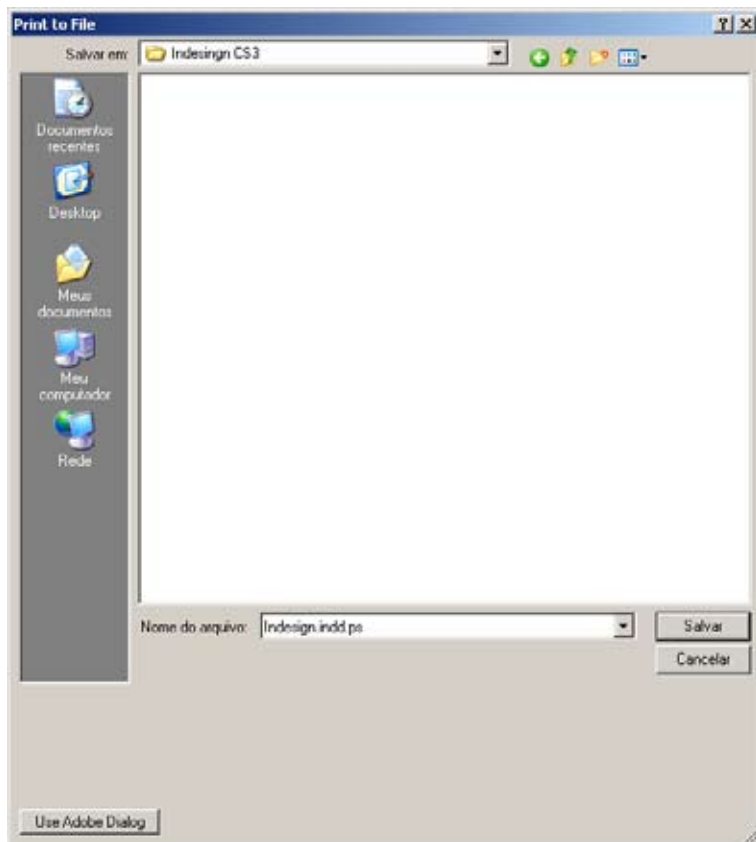
Preset: [High Resolution].



## QUADRO - SUMMARY



Clique **Print** para gerar o arquivo (PostScript).



Direcione onde será salvo seu arquivo em (PostScript).

Fechamento de Arquivos



INDESIGN cs3

Exemplo: Arquivo Final, já com marca de corte e sangria.

