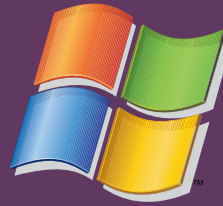


Fechamento de Arquivos

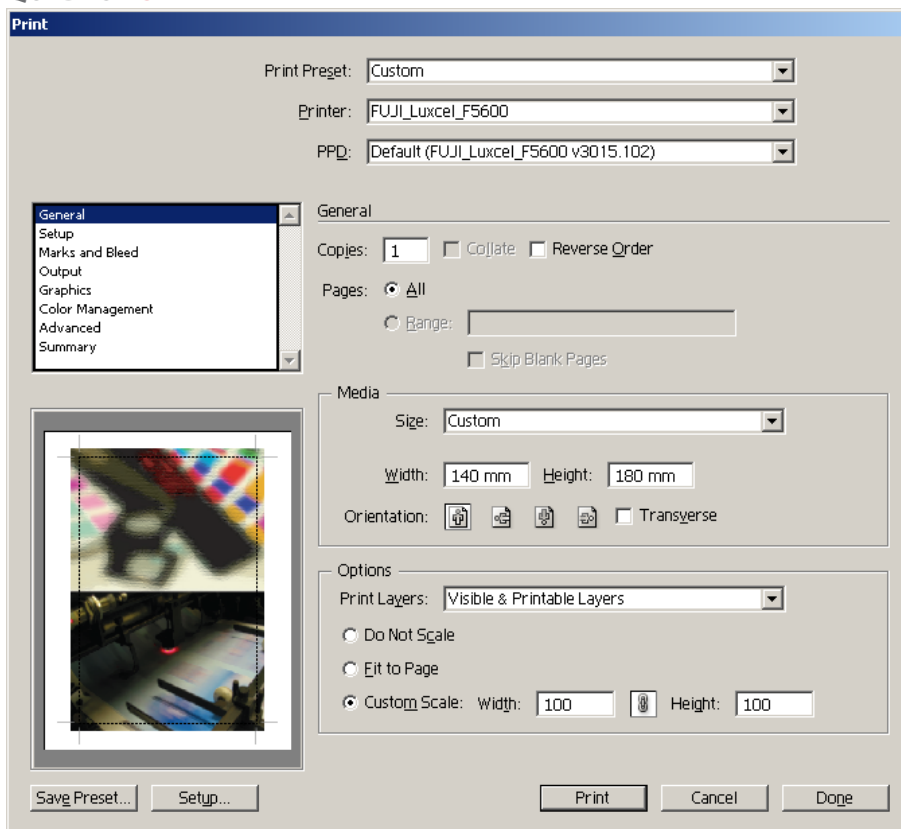


ILLUSTRATOR CS3





QUADRO - GENERAL

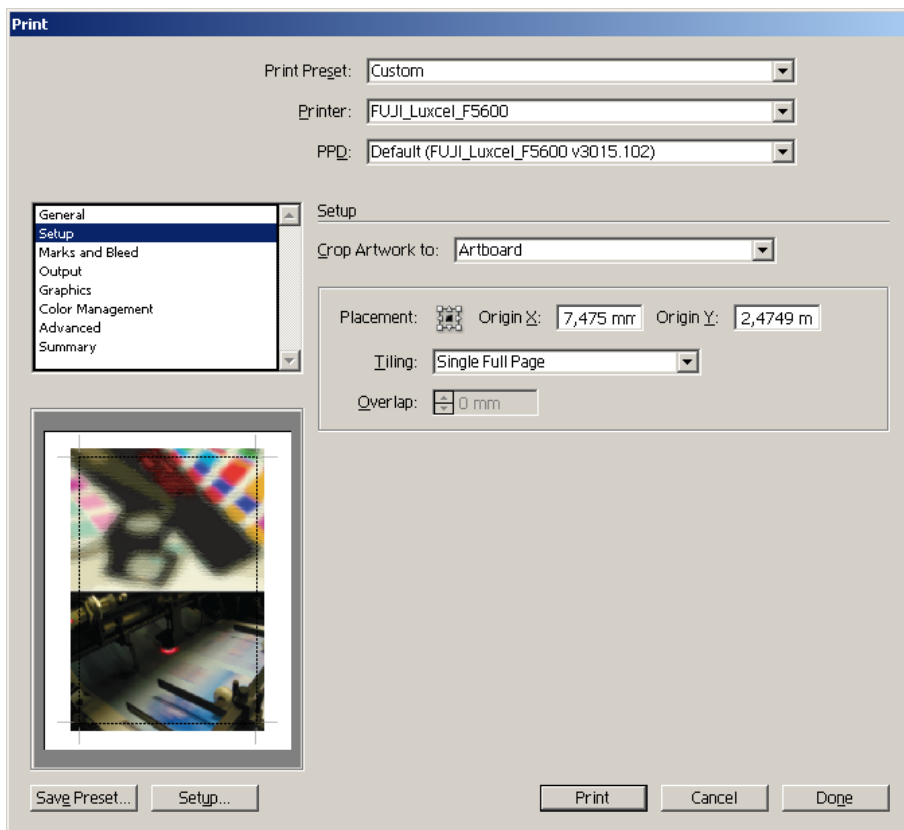


Print - Fuji_Luxcel_F5600

PDD - (Fuji_Luxcel_F5600)

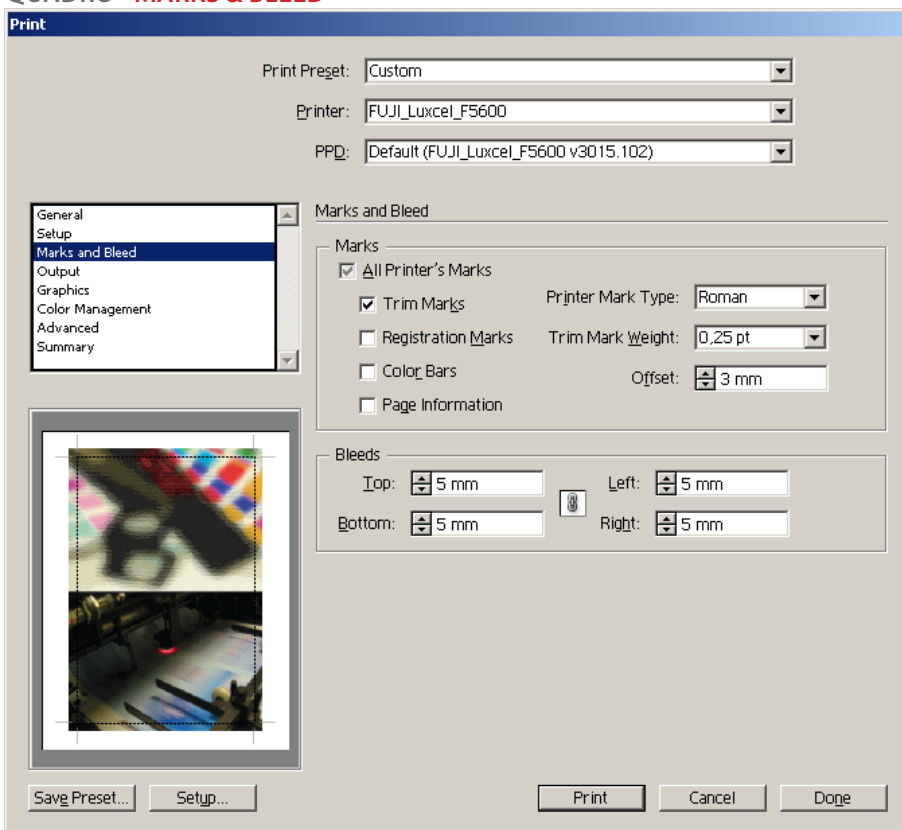
Size - Escolha o formato da página com acréscimo de 5 mm na largura e altura. Caso não encontre o formato desejado digite as medidas nos campos **Width** e **Height**.

QUADRO - SETUP



Crop Artwork - escolha Artboard

QUADRO - MARKS & BLEED

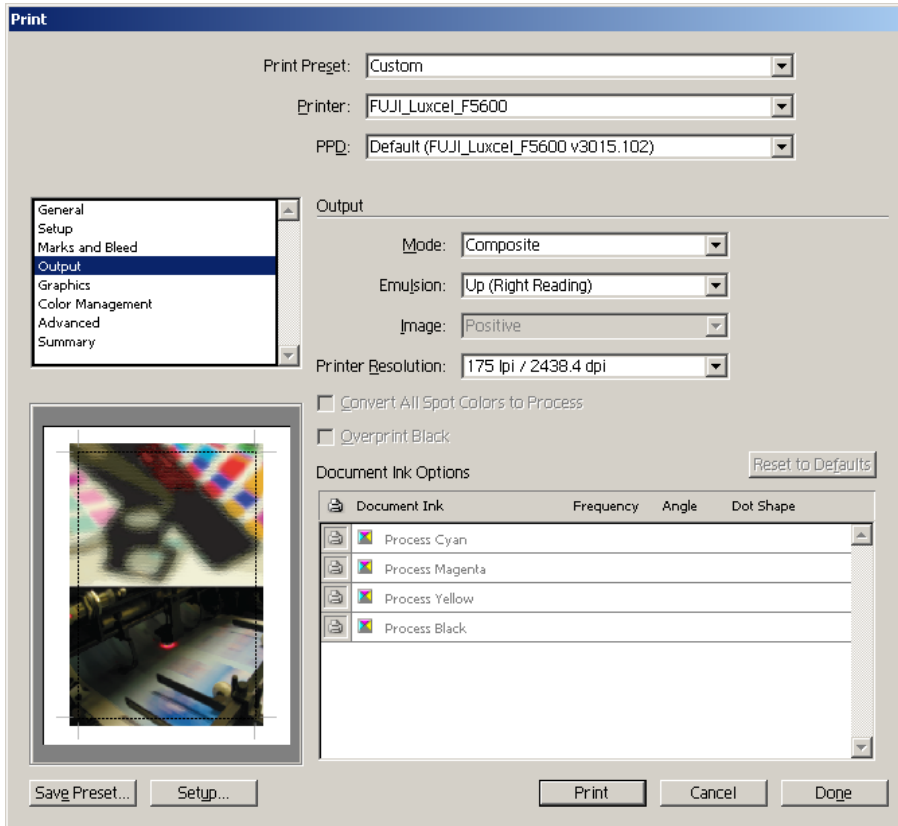


All Printer's Marks:
marque opção **Trim Marks** as outras
deixe desmarcadas.

Offset: 3mm

Bleeds: = Sangria
Top: (5mm) Bottom: (5mm)
Left: (5mm) Right: (5mm)

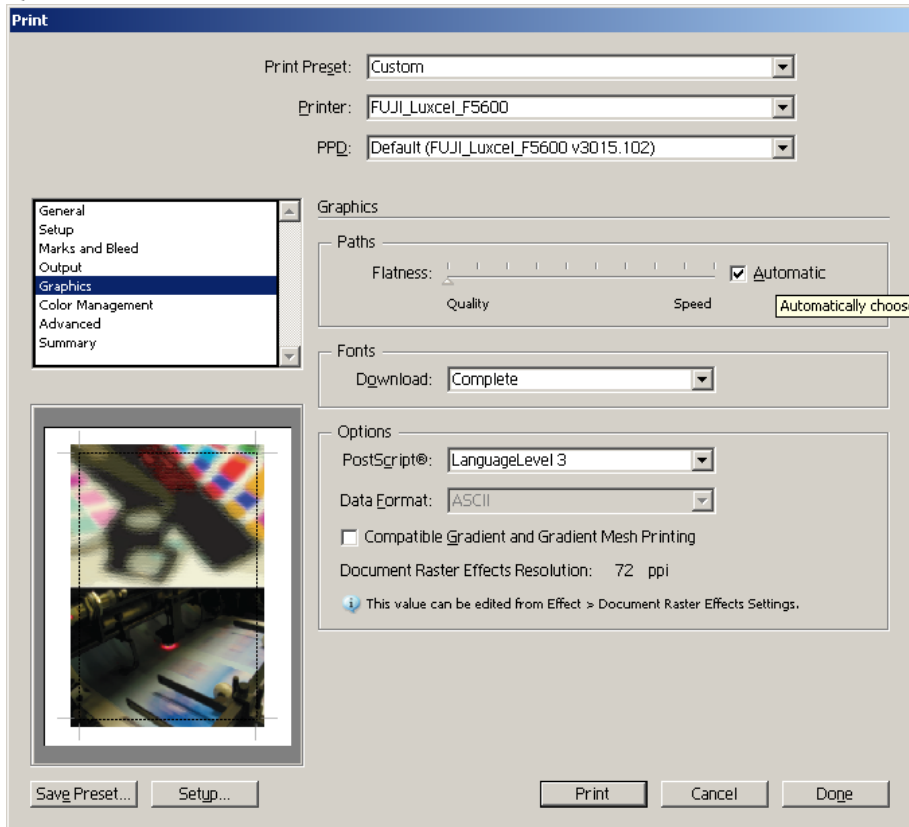
QUADRO - OUTPUT



Mode - composite

Printer Resolucion
175 lpi / 2438 dpi

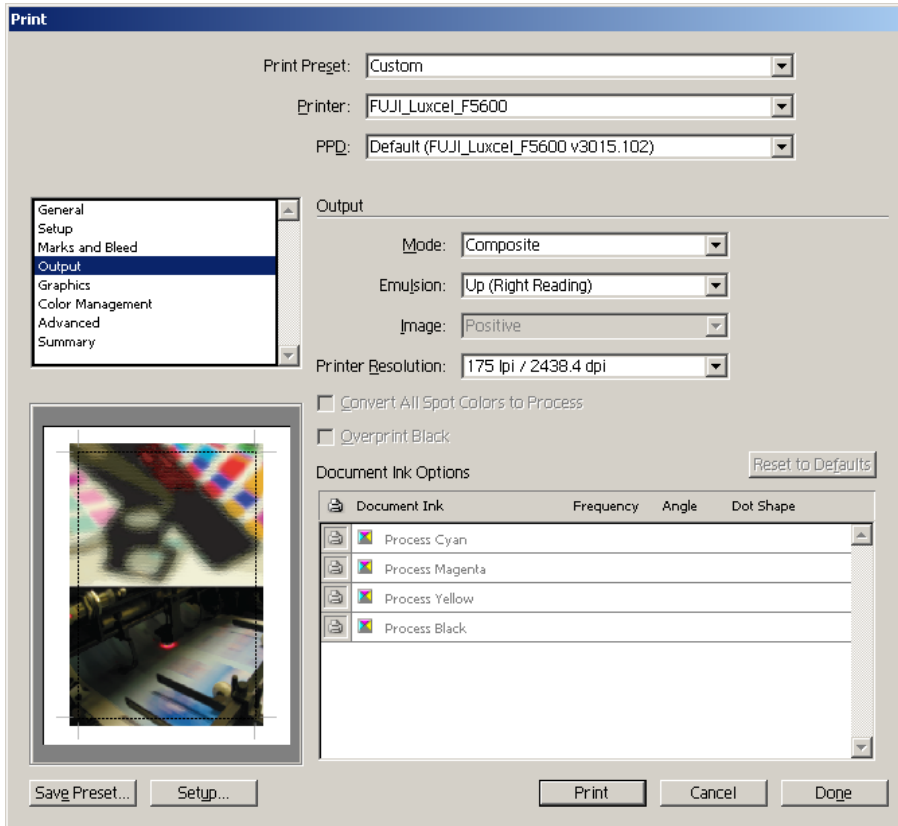
QUADRO - GRAPHICS



Download: Complete.

PostScript®: LanguageLevel3.

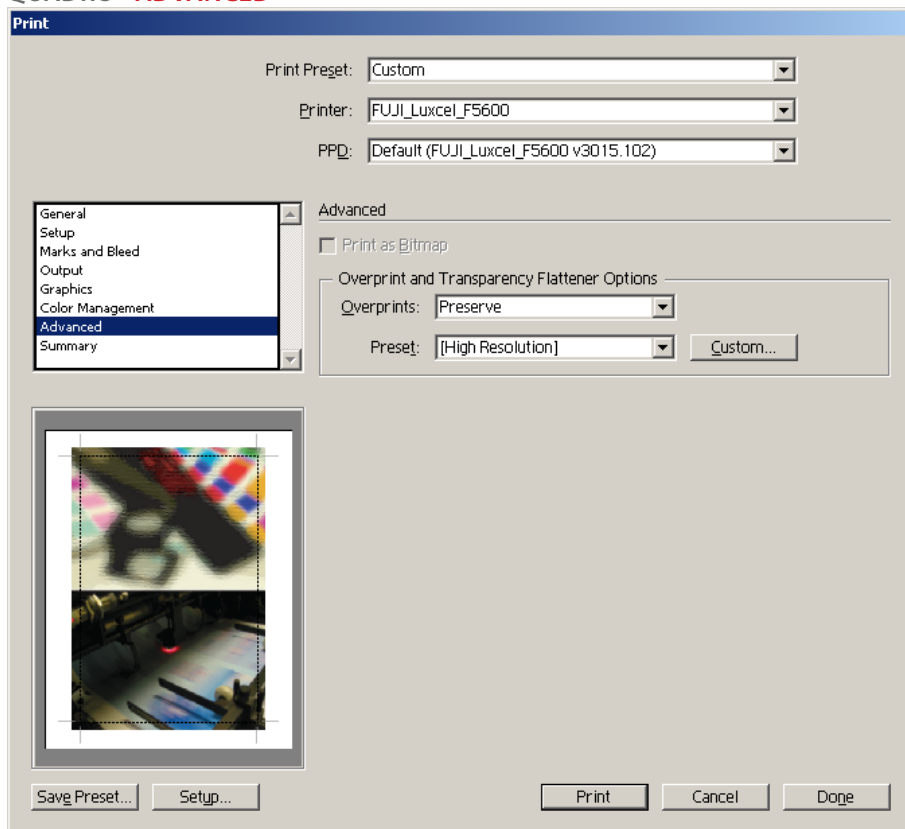
QUADRO - COLOR MANAGEMENT



Mode - Composite.

Printer Resolucion
175 lpi / 2438 dpi.

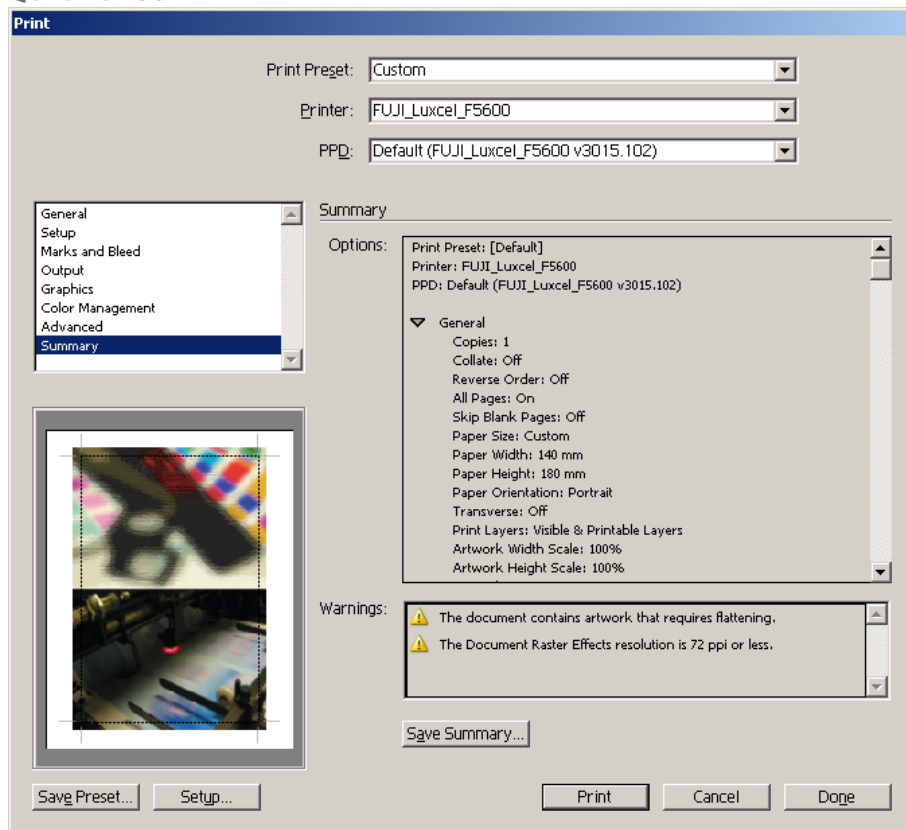
QUADRO - ADVANCED



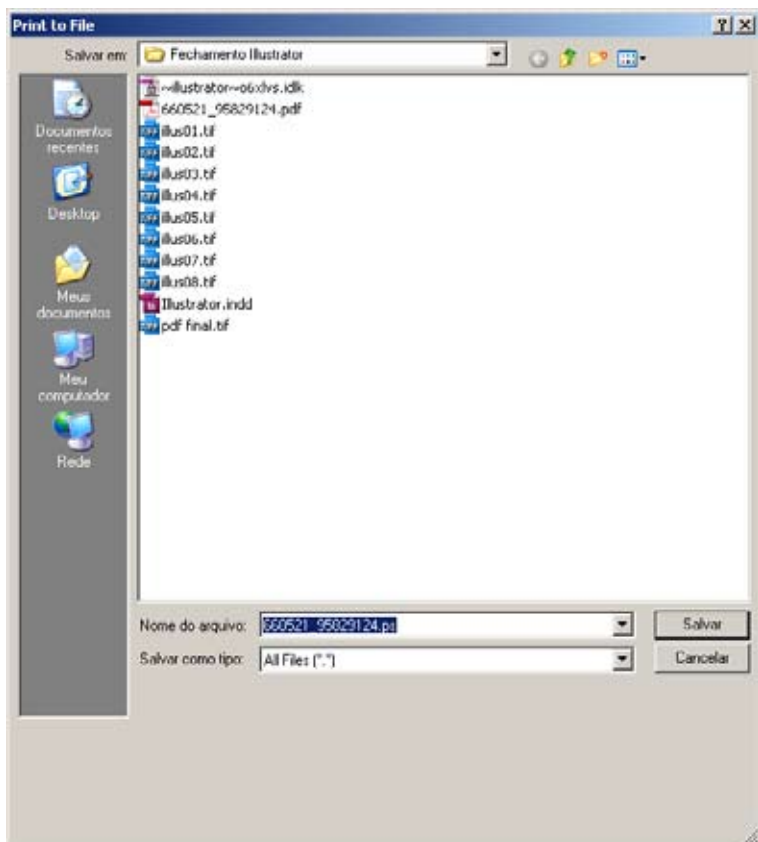
Overprints: Preserve.

Preset: [High Resolution].

QUADRO - SUMMARY



Clique **Print** para gerar o arquivo (PostScript).



Direcione onde será salvo seu arquivo em (PostScript).

Exemplo: Arquivo Final, já com marca de corte e sangria.

